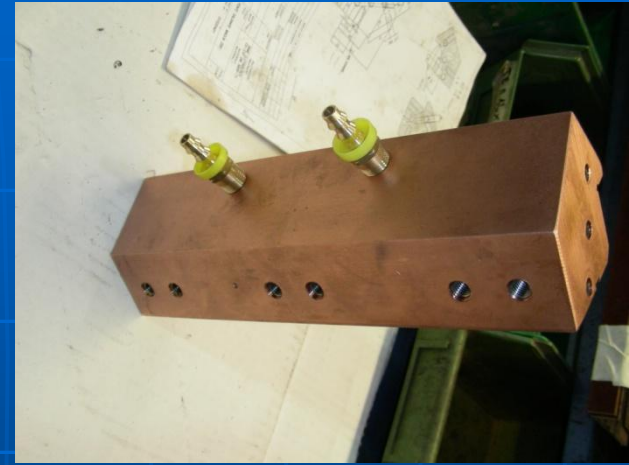


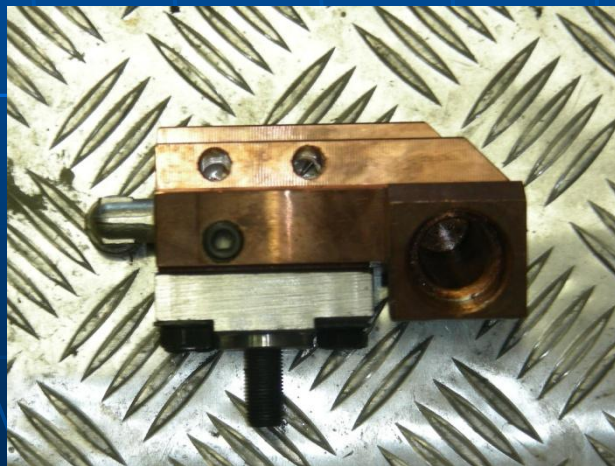
# Presentazione ricambi

- Portaelettrodi
- Ponti saldanti
- Archetti di tensione
- Tasselli di contatto
- Magneti completi
- Traverse di supporto magneti
- Trecce di saldatura
- Presse di saldatura

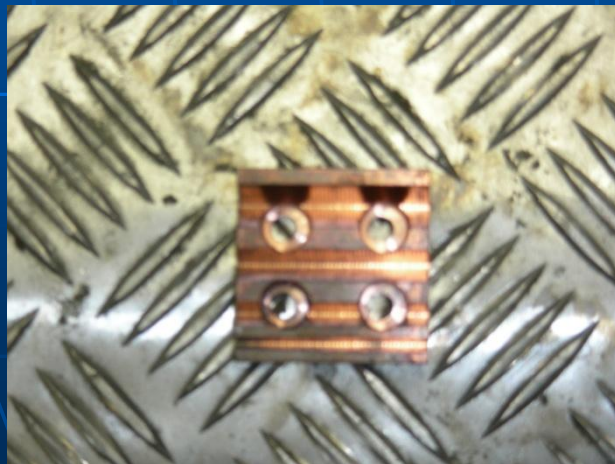
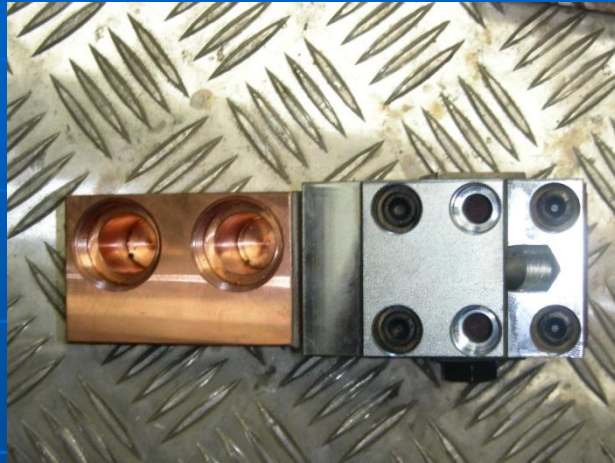
# Esempi di ricambistica



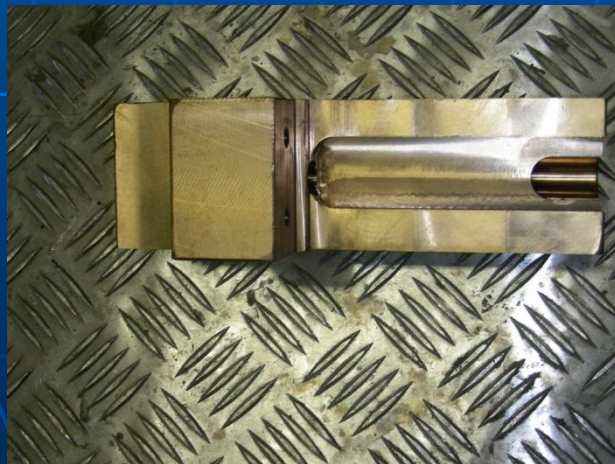
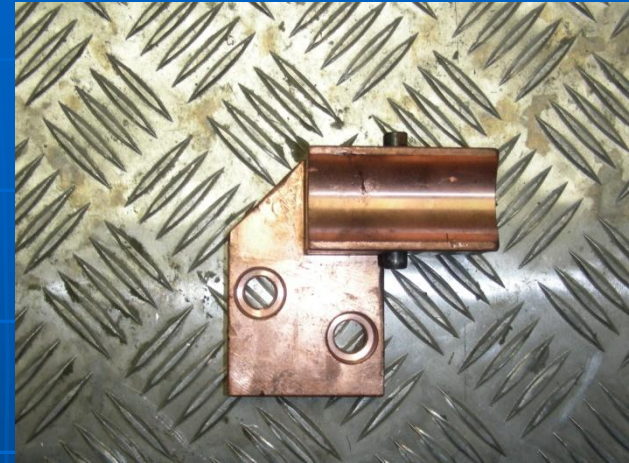
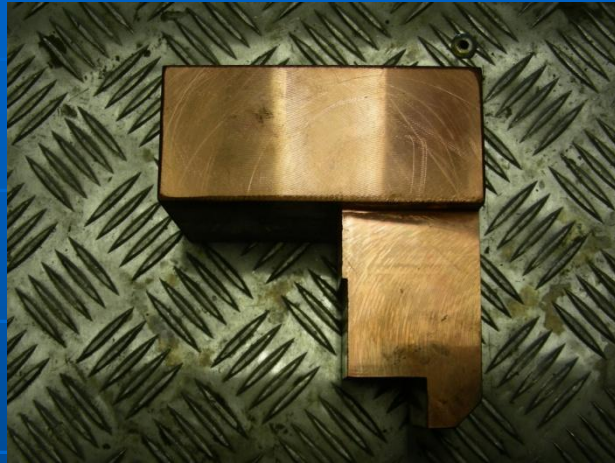
# Esempi di ricambistica



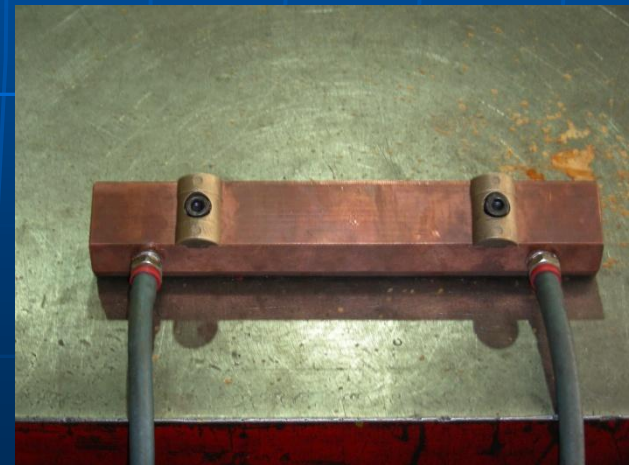
# Esempi di ricambistica



# Esempi di ricambistica



# Esempi di ricambistica



# Esempi di ricambistica

